



# Amber Grove

CONDOMINIUMS

**#603-388 Pipeline Road**



1,457 sq.ft.



4 Bedroom



Garage +  
1 Exterior Stall



2.5 Bathroom

**QUICK POSSESSION PROMOTIONAL PRICING  
(MOVE IN BY FEBRUARY 28 AND SAVE)**

~~\$390,000~~ **\$379,000**

PLUS RECEIVE AN  
ADDITIONAL  
PARKING SPOT

## Pricing Also Includes:

- Whirlpool Kitchen Appliances
- Whirlpool Washer/Dryer Package
- Central Air Conditioning
- Thermofoil Cabinets & Quartz Countertops in Kitchen
- 1-2-5-10 New Home Warranty



Anita Sharma Turner  
RE/MAX Associates  
(204) 997-5337

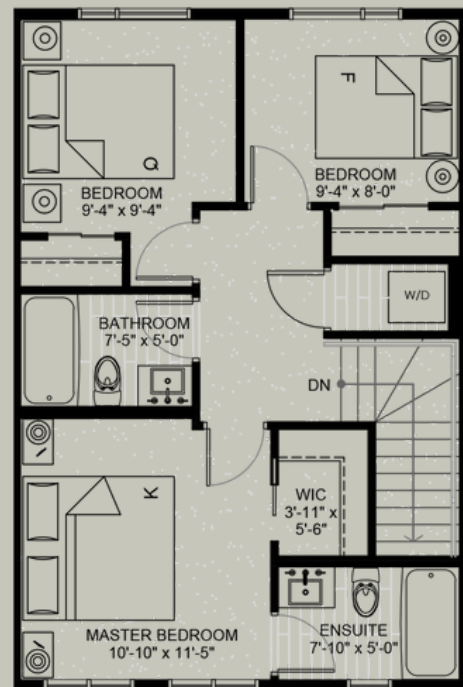
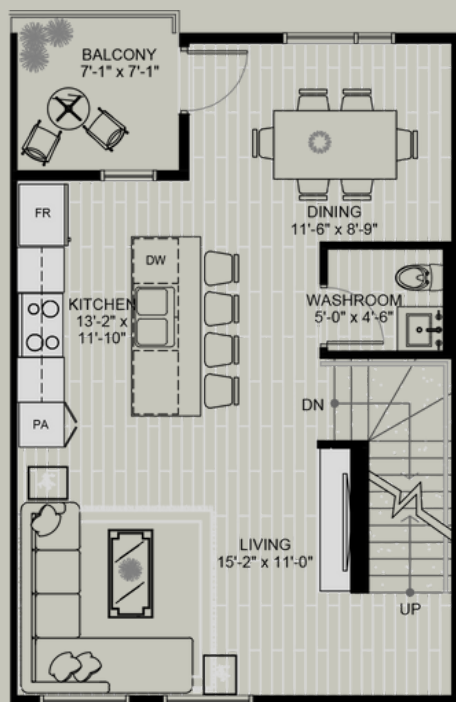
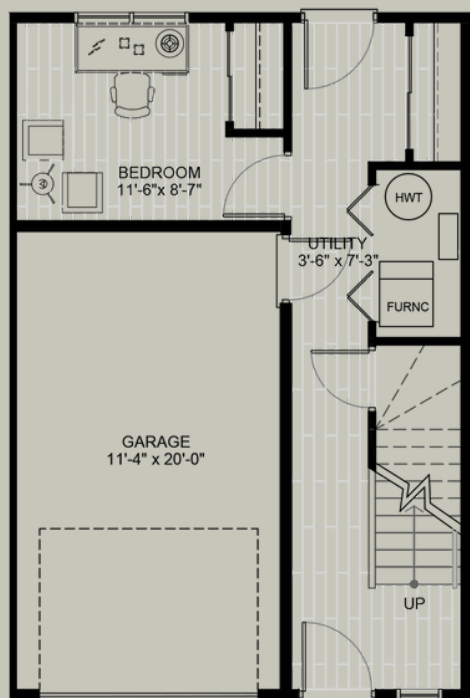
[ambergrove@qualico.com](mailto:ambergrove@qualico.com)

**Learn more at [ambergrove.ca](http://ambergrove.ca)**

# Amber Grove

CONDOMINIUMS

## #603-388 Pipeline Road *The Aspen +*



Anita Sharma Turner  
RE/MAX Associates  
(204) 997-5337  
ambergrove@qualico.com  
**Learn more at [ambergrove.ca](http://ambergrove.ca)**