

Amber Grove

CONDOMINIUMS

#912-388 Pipeline Road



979 Sq.Ft.



2 Bedroom



Exterior Parking



1.5 Bathroom

**QUICK POSSESSION PROMOTIONAL PRICING
(MOVE IN BY FEBRUARY 28 AND SAVE)**

~~\$325,900~~ **\$314,900**

PLUS RECEIVE AN
ADDITIONAL
PARKING SPOT

Pricing Also Includes:

- Whirlpool Kitchen Appliances
- Whirlpool Washer/Dryer Package
- Central Air Conditioning
- Lower Level Ready for Development
- 1-2-5-10 New Home Warranty



Anita Sharma Turner
RE/MAX Associates
(204) 997-5337

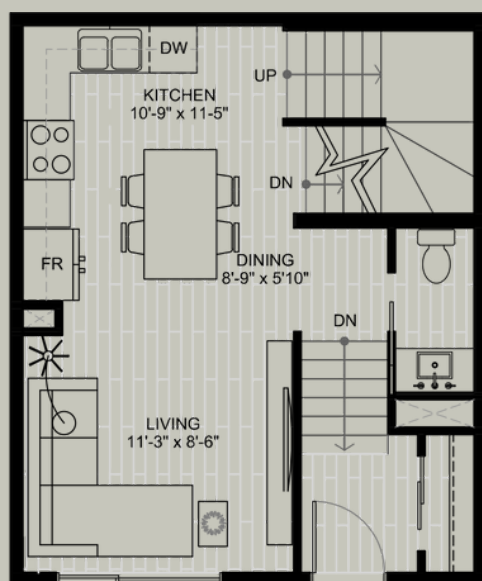
ambergrove@qualico.com

Learn more at ambergrove.ca

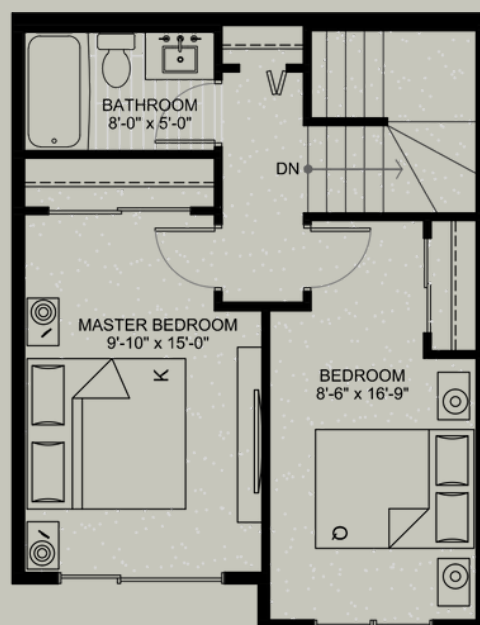
Amber Grove

CONDOMINIUMS

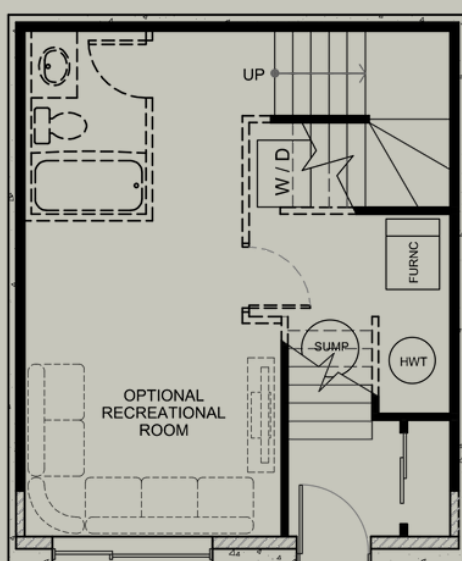
#912-388 Pipeline Road
The Curreant



MAIN FLOOR



SECOND FLOOR



Anita Sharma Turner
 RE/MAX Associates
 (204) 997-5337
ambergrove@qualico.com
Learn more at ambergrove.ca