

\$429,900 INC. GST

THE ASPEN | 201-388 PIPELINE RD

 4 Beds  2.5 Baths  1457 SQFT

Amber Grove

CONDOMINIUMS

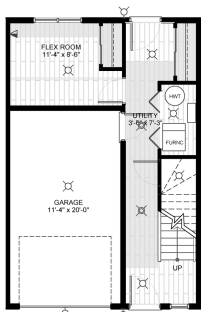


FEATURES

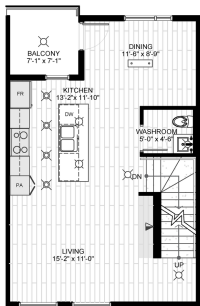
- Quick Possession
- Kitchen Appliances
- Window Treatments
- Air Conditioning
- Attached Garage w/ Remote
- Plus: Exterior Stall

DESIGN FINISHES

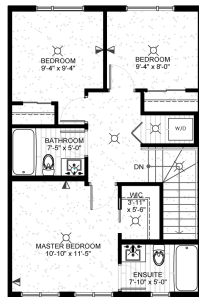
- 'Satin Sleet' Thermofoil Cabinetry (throughout)
- 'Satin Starless' Thermofoil Island
- 'Everest White' Quartz Countertops throughout Kitchen
- 'Wentworth White' Dulux Lifemaster Paint in throughout
- 'Blue Shades of Blinds' Ceratec Kitchen Backsplash
- 'Frosted Grey' Impact Luxury Vinyl Plank
- 'Twilight' Short n Sweet Carpet



MAIN FLOOR



SECOND FLOOR



THIRD FLOOR

ANITA SHARMA TURNER

RE/MAX Associates
204-989-9000
anita@anitasharmaturner.com

 **STREETSIDE**
DEVELOPMENTS

A QUALICO® Company