

# THE ALTON

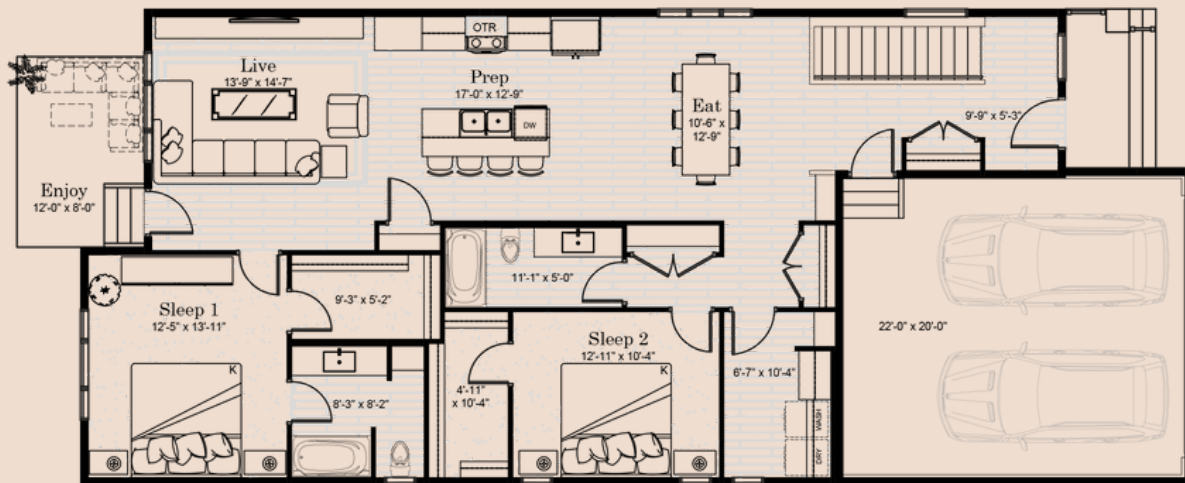
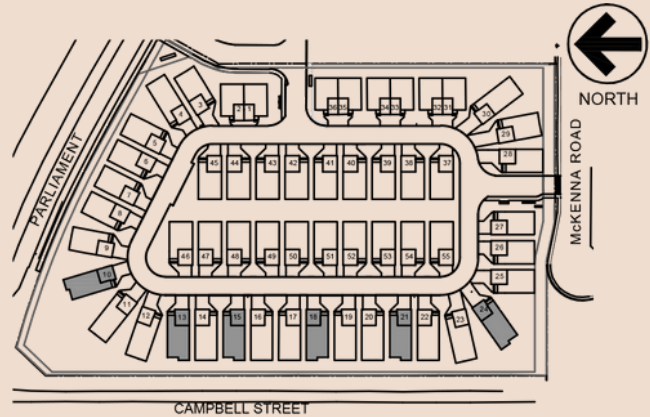
# THE BUNGALOWS AT HARBOUR LANDING

**1,530 SQ. FT**

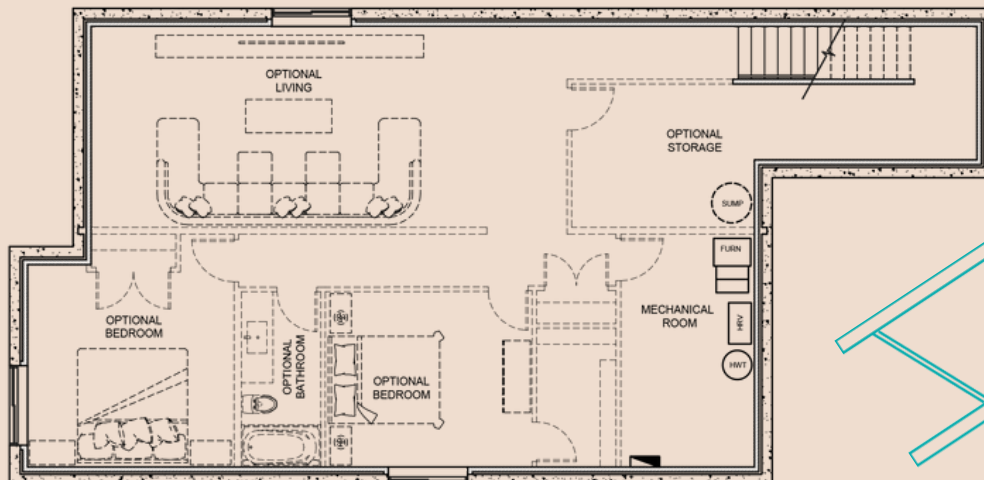
**2 Bed | 2 Bath**

### FEATURES:

- Primary Ensuite
- Double Walk-in Closets
- Attached Double Garage
- 12'x8' Concrete Patio
- Finished Basement Option



### LOWER LEVEL - OPTIONAL DEVELOPMENT



[THEBUNGALOWSREGINA.CA](http://THEBUNGALOWSREGINA.CA)

\*The developer reserves the right to change plans, specifications, features, materials, and dimensions without notice in its sole discretion. All renderings, colour schemes, floor plans, maps and displays are artists' conceptions and for illustration purposes only. See sales representative for full details. E&OE.