


## The Heron I

147 Grey Heron Drive  
Sage Creek

**\$584,900 INC. GST**

 1,827 SQFT

 3 Bedroom

 2.5 Bathroom

 Double Garage



### Design Selection

- **Cabinets:** Kitchen Craft Coventry Thermofoil in 'Satin White'
- **Kitchen Island Cabinets:** Kitchen Craft Coventry Thermofoil in 'Satin Starless'
- **Countertops:** GS Quartz in 'Ice Galaxy'
- **Kitchen Backsplash:** Ames Marlow Series | 3" X 6" in 'Smoke Glazed' MASMG36; Installed: Horizontal Brick Pattern
- **Kitchen Hardware:** Contemporary Metal Pull in 'Brushed Nickel' BP873160195
- **Flooring:** Torlys Luxury Vinyl Plank Rigidwood Firm Premier in 'Dakota'
- **Carpet:** Shaw-Shake it up in 'Cement' 00510
- **Paint:** Dulux - DLX1001-1 - Delicate White in a Matte Finish
- **Primary Ensuite Tile:** Ames Verona Series | 12" X 24" in 'Carrara White' DSCW1224P 'Polished'; Installed: Horizontal Stacked; Grout: Custom #640 Arctic White
- **Second Level Bathtub Tile:** Standard Glossy White Tile | 8" X 12"
- **Plus:** Central Air Conditioning
- **Exterior:** Bothba Blue

\*The Developer reserves the right to change plans, specifications, features, materials, and dimensions without notice in its sole discretion. All renderings, colour schemes, floor plans, maps and displays are artists' conceptions and for illustration purposes only. See sales representative for full details. E&OE.



\*Please note photo is for concept only. See sales team for exterior colour selection



**AVERIE HILL | REALTOR®**

Qualico Realty Services (Manitoba) Ltd.

204.451.4179

GREYHERON@QUALICO.COM

**STEPHANIE CHILDHEROSE | REALTOR®**

Qualico Realty Services (Manitoba) Ltd.

204.999.7833

GREYHERON@QUALICO.COM

Learn more at **GREYHERON.CA**

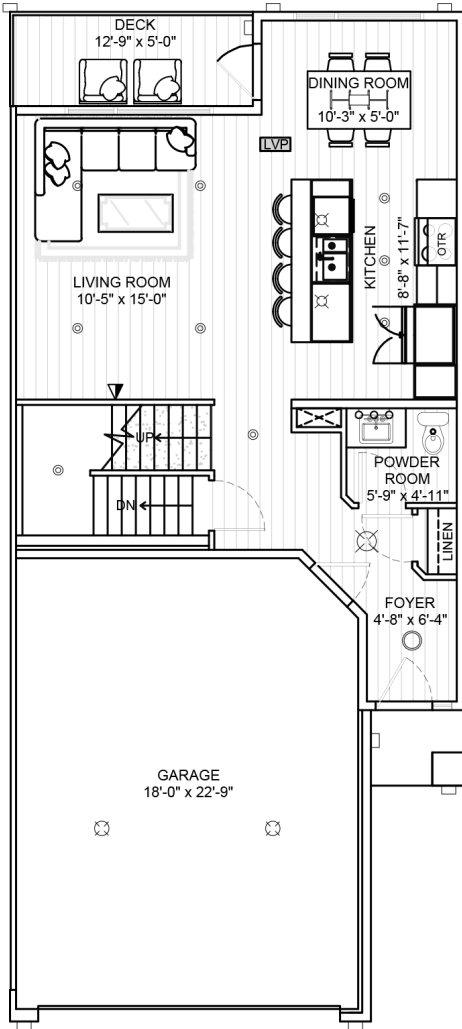
# GREY HERON RISE

CONDOMINIUMS

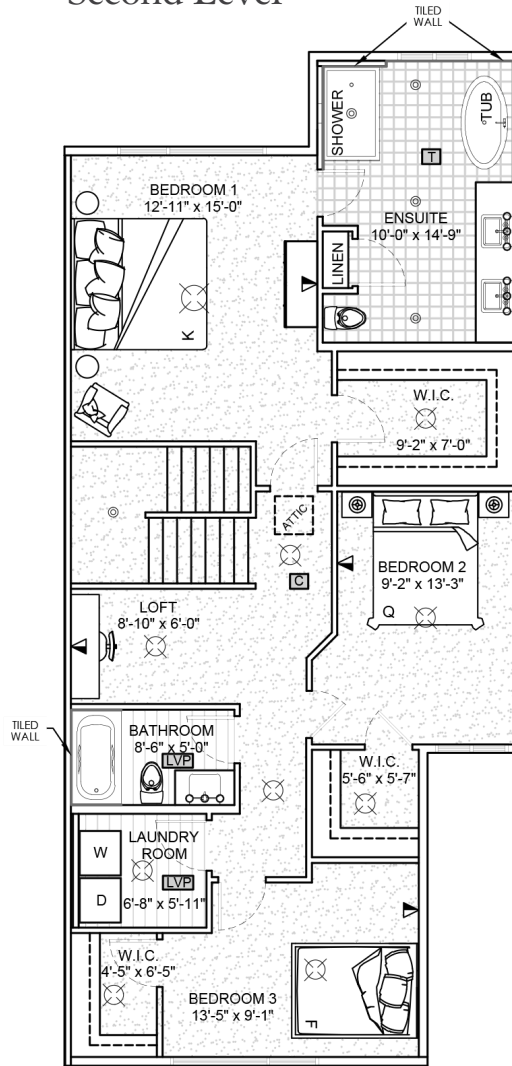
147 Grey Heron Drive

1827 SF | 3 Bed | 2.5 Bath

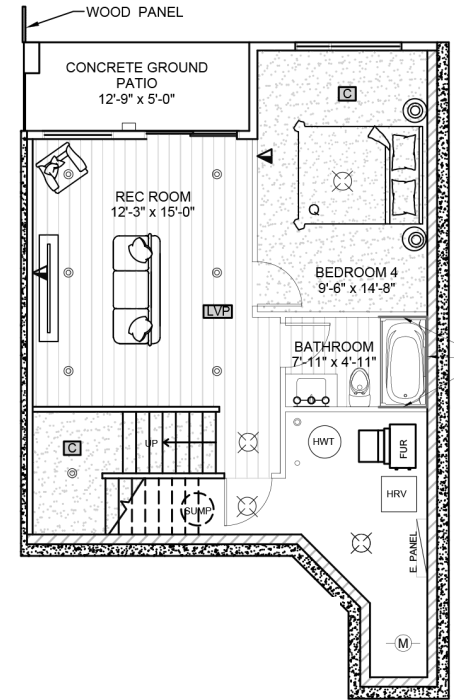
Main Level



Second Level



Lower Level (Optional Development)



## Features

- Walk-out basement with wetland views
- Double attached garage & covered entrance
- Large primary bedroom with sloped ceiling, large walk-in closet and tiled ensuite
- Private balcony off the kitchen
- Concrete patio with privacy panel
- Convenient amenity rich location
- Maintenance-free living
- Summer 2023 Possession

